

E-News Issue: July 2021

With all the chaos and cancelations, our annual 2020 newsletter was postponed, along with almost everything else. As the Board of Directors wraps up its Annual General Meeting, it seems appropriate to catch our donors up on what we were able to accomplish during an extraordinary year and a half. Thank you for your continued support of the Foundation, especially in these challenging times!

Despite the difficulties, the Carman Area Foundation participated in a number of innovative granting programs that increased financial support for many of our local organizations, including the Manitoba Build150 project and Emergency Community Support Funds, offered by Community Foundations of Canada.



Friday, July 23rd
Annual Charity Golf
Tournament at the Carman
Golf Club

Thursday, November 4th
Workshop with Volunteer
Manitoba

November 15th - 21st
Endow Manitoba 24 Hour
Giving Challenge

Carman Area Foundation hosted its annual golf tournament on August 7th, 2020 at the Carman Golf Course. Net proceeds for the day totaled over \$11,900.



Thank you to our sponsors,

Vanderveen Commodity Services, Greenland Equipment, Town of Carman, Homestead Co-op, Walinga, Innovair, Custom Casing, Access Credit Union, Newman Hand Agencies, Hi-Tech Seals, NSK Canada, Royal LePage Legacy Realty, Roland Air Spray, SC Building Systems, Innovative Agri Tiling, Carman Ford, Richardson Pioneer.

We invite you to join us for this year's tournament on Friday, July 23rd. More details are available on our website, www.carmanareafoundation.com.



The 2020 Endow Manitoba Giving Challenge was a week long event instead of the traditional 24-hour format. The Giving Challenge is organized by The Winnipeg Foundation and encourages people to invest in their local community foundation. The donations are then "stretched" by The Winnipeg Foundation and the province of Manitoba. In 2020, CAF received **\$46,590** in donations, which were then stretched by 20% so the total amount received was **\$50,590**. Thank you to all those that supported Carman Area Foundation during this event!



In November, Carman Area Foundation hosted a virtual workshop with Jackie Hunt, Executive

Director of Volunteer Manitoba. The workshop covered "Roles and Responsibilities of a Non-Profit Board" and Jackie's extensive background and experience in board governance and organizational development provided a wonderful resource for local organizations to access. Watch for more information on our workshop with Volunteer Manitoba coming up November 4th, focusing on getting started in social media.



**SMART GIVING PLAN
AWARENESS WEEK**

December 6th to December 12th, 2020

Due to Covid restrictions, CAF was unable to host its usual seminar on planned giving. Thank you to Board member Larry Hillmer who provided the Carman community with a series of tips for smart charitable giving that maximize tax benefits while supporting local charities.



In December, Carman Area Foundation said goodbye to long-time Executive Director, Fred Colvin. Thank you Fred for your years of dedicated service and commitment to our communities. The Board wishes Fred all the best in his well-deserved retirement.



Following Fred's retirement, the Carman Area Foundation joined the Endow Manitoba staffing pilot project. CAF,

along with the Miami Area Foundation, Morden Area Foundation and the Pembina-Manitou Area Foundation have signed on to share staff to support the work of the boards and community foundation movement. The goal of the pilot project is for the regional staff to take on core operational activities of the board so the volunteer board can focus their limited time on foundation priorities.

Jennifer Ching-Faux joined CAF as the community foundations coordinator in January 2021 and mid-June, Caddie Crampton will join the regional staff team while Jennifer takes leave.

**Dine-at-Home
Gala**



Friday, April 16,
2021



Big Willy's
"Smoked Sampson"



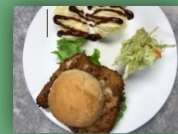
Breakaway's
"Beaver Buraer"



Chicken Chef's
"Chef Stacker"

Get a swag bag including dessert & gift with each meal ordered!

Sponsored by



Crazy Laady's
"Schnitzel Burger"



Elm Creek Café's
"Surf & Turf"



Scotswood Links'
"Burgasaureous"

Carman Area Foundation celebrated its traditional gala at home this year, supporting six area restaurants in the first ever Dine-at-Home Gala. Over 400 burgers were ordered and donations received are sitting at over \$66,000. Thank you to everyone that supported CAF during the event. We sincerely hope we are able to safely gather next year!



2020 Grant Highlights

Last year, the Carman Area Foundation, boosted by the Manitoba Build150 program, granted over \$116,000 to 39 community organizations. Supported by Richardson International, Manitoba Build 150 provided matching funds to community foundations to support legacy projects.

Grants marked with a * also received Build 150 funds.

Back on Cue Community Theatre - \$300	Dufferin Ag Society - \$3,500*
Big Brothers Big Sisters of the Pembina Valley - \$1,230	Dufferin Historical Society - \$1,000
Boyne Regional Library - \$3,560*	Elm Creek Canada Day Committee - \$6,000*
Boyne Care - \$5,000	Elm Creek Community Hall - \$4,000*
Boyne Valley Hostel Group - \$4,325	Elm Creek Housing Corp. - \$2,500
Carman Cardinals Baseball Club - \$3,000*	Elm Creek School - \$500
Carman & Community Active Living Centre - \$2,000	Elm Creek Stay & Play Centre - \$6,220*
Carman & District Farmers Market - \$1,000	Golden Prairie Arts Council - \$3,320*
Carman Dufferin Communities in Bloom - \$3,000*	Linear Grain Fund - \$5,360
CDR: Carman Community Hall - \$1,013	Roland Golf Course - \$1,660
CDR: Carman Swimming Pool - \$2,000	Roland Pumpkin Fair - \$1,120
CDR: Carman Skate Park - \$6,000*	Roland School - \$2,500*
Carman Family Resource Centre - \$250*	Roseisle Planning Committee - \$2,000*
Carman Handi-Van Corp. Fund - \$1,050	South Central Committee on Family Violence - \$300
Carman Memorial Hospital - \$5,000*	Sperling Cemetery Board - \$1,000*
Carman Minor Ball - \$740	Sperling Rink Board - \$6,850*
Carman Minor Ball Facility - \$6,547*	St. Claude Community Centre - \$2,000
Carman Minor Hockey - \$300	TLC Centre - \$2,500
Carman Palliative Care - \$3,810	The Stepping Stone—Aspen Winds - \$500
Child & Family Services - \$500	Wee Care Child Centre - \$2,500

The Carman Collegiate Youth in Philanthropy Committee presented \$4,500 in grants to eight local organizations:

Back on Cue Community Theatre - \$500

Carman Dufferin Communities in Bloom - \$500

Carman Family Resource - \$250

Carman Minor Ball Facility - \$500

Carman Palliative Care - \$550

Child & Family Services - \$500

Ronald McDonald Family House - \$1,000

South Central Committee on Family Violence - \$700

CAF also selected 11 community organizations to receive Emergency Community Support Funds, offered by Community Foundations of Canada and the federal government.

Boyne Regional Library - \$23,550

Carman Farmers' Market - \$1,500

Wee Care Child Centre - \$19,850

Carman Wellness Connections - \$6,950

Boyne River Ukulele Group - \$500

Carman Family Resource Centre - \$1,750

Elm Creek Housing Corp. - \$2,500

Elm Creek Skating Rink - \$1,400

Elm Creek Stay & Play - \$2,000

Sperling Rink Board - \$6,000

Wee Care Child Care Centre - \$6,850

2021 Grant Highlights

In 2021, the Carman Area Foundation hit a granting milestone, granting \$101,000 to 32 community organizations and projects.

Boyne Regional Library - \$1,880

Boyne River Keepers - \$2,000

Boyne Valley Lodge - \$5,000

Carman & Community Chamber of Commerce - \$1,350

Carman Dufferin Communities in Bloom - \$3,000

CDR: Carman Community Hall - \$1,000

CDR: Carman Swimming Pool - \$2,040

CDR: Kings Park Basketball Courts - \$3,200

Carman Family Resource Centre - \$570

Carman Golf and Curling Club - \$700

Carman Handi-Van Corp. Fund - \$4,140

Carman Minor Ball - \$3,000

Carman Minor Hockey - \$600

Carman Palliative Care - \$4,225

Carman Seniors Resource - \$2,250

Child & Family Services - \$2,720

Dufferin Ag Society - \$2,125

Dufferin Historical Society - \$465

Prairie Rose School Division - \$400

Elm Creek Canada Day Committee - \$5,000

Elm Creek Community Hall - \$2,500

Elm Creek Housing Corp. - \$7,000

Elm Creek Skating Rink - \$1,972

Elm Creek Stay & Play Centre - \$4,000

Golden Prairie Arts Council - \$5,635

Linear Grain Fund - \$2,840

Midland Nursery School - \$1,200

R.M. of Roland - \$1,800

Roland Golf Course - \$3,000

Roseisle Planning Committee - \$1,000

Sperling Community Club - \$8,000

TLC Centre - \$3,600

Visions of Independence - \$5,000

Wee Care Child Centre - \$2,500